

# PLIDCO®

## PLIDCO® SPLIT+SLEEVE

### Permanently repairs a variety of pipelines

Standard working pressure is 1000 psig. Fittings are available in longer lengths such as 18", 24" and longer as well as higher working pressures such as 1500 psig or 2000 psig; if higher working pressures or longer length is needed, it can be designed and built to meet your requirements. Fittings are tested to 1.5 times the recommended working pressure.

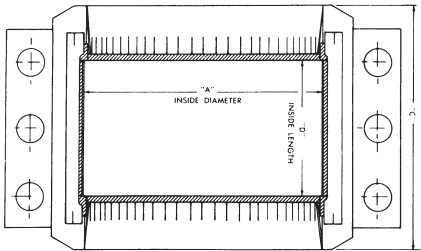
Buna-N packing is standard;  
Viton and Silicone and other materials are available upon request.

Options Available:  
Marine Trim for corrosion protection  
Hinges to ease with installation and handling  
Vents available per customer specifications.

Standard body materials are A106 Gr. C seamless pipe,  
A216 Gr. WCC cast steel, and A516 Gr. 70 steel plate.  
Standard bolting is A193 Gr. B7 with A194 Gr. 2H nuts.

Patented steel GirderRings prevent displacement & damage of seals during installation.

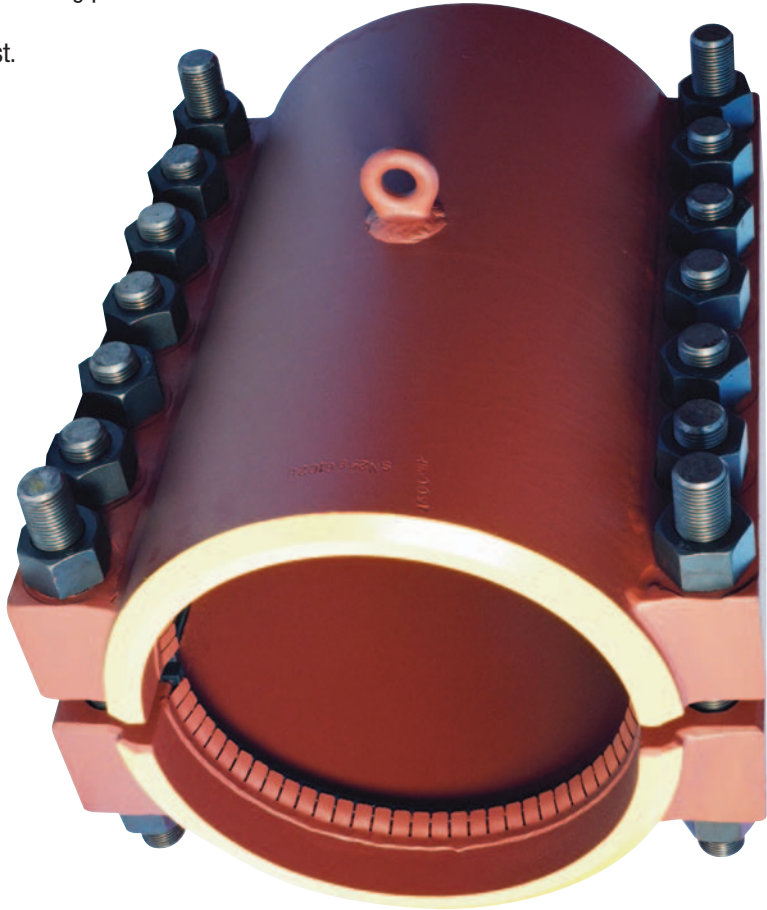
#### DIMENSIONS STANDARD PLIDCO® SPLIT+SLEEVES



#### STANDARD LENGTH PLIDCO® SPLIT+SLEEVE SPECIFICATIONS 1000 PSIG MAX. WORKING PRESSURE

API Pipe Size	Inside Diameter "A"	Inside Length "D"	Overall Length "C"	Approx. Weight Pounds
1-1/2	2-7/8	5-1/2	9	26
2	3-1/8	5-3/4	9	23
2-1/2	3-3/8	5-1/4	8-1/2	70
3	4	5-1/4	8-1/2	34
4	5	5-1/4	8-1/2	42
6	7-1/8	5-1/4	9	62
8	9-1/8	5-1/4	10	125
10	11-1/4	5-1/2	10-1/2	147
12	13-1/4	5-1/2	10-1/2	230
14	14-1/2	8	14	385
16	16-1/2	8	14	420
18	18-1/2	8	14	555
20	20-1/2	8	14	580
22	22-1/2	8	14	635
24	24-1/2	8	14	680
26	26-1/2	8	14	865
28	28-1/2	8	14	930
30	30-1/2	8	14	990
32	32-1/2	8	14	1025
34	34-1/2	8	14	1200
36	36-1/2	8	14-1/8	1330
38	38-1/2	8	14-1/4	1405
40	40-1/2	8	14-1/4	1445
42	42-1/2	8	15-7/8	1805
48	48-1/2	8	16	2220

Dimensions in inches.



#### CONSTRUCTION FEATURES



Cross-section of Plidco® Split+Sleeve shows location of longitudinal packing and patented steel GirderRings which hold packing securely in place to prevent its displacement during installation.



Sectional view of circumferential GirderRings show how they make displacement of packing impossible by securely supporting and holding it in place.



If installation is to be welded, simply fillet-weld ends, seal-weld sides, and seal-weld nuts and studs.



**THE PIPE LINE DEVELOPMENT COMPANY**  
870 Canterbury Road • Cleveland, Ohio 44145 • USA  
440-871-5700 • 1-800-848-3333 • Fax 440-871-9577  
Email pipeline@plidco.com • www.plidco.com

"Working together to make hazardous piping safer"